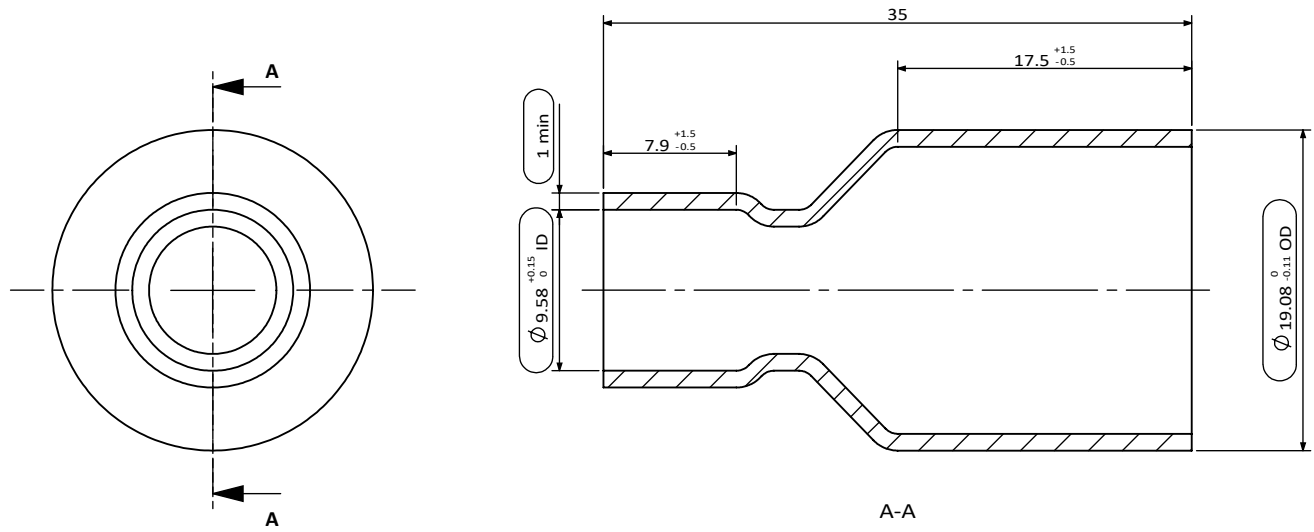


HGI Part No. 1004-1206

22/05/2020 HENRY JTP *JTP* APPROVED DOCUMENT

REV. 版本	ENC 工程变更通知	Description 变更描述	Name 变更人	Date 变更日期



Technical requirements:

技术要求:

- Copper tube must comply with ASTM B280 or AS 1432-1966 99.90% min Cu and min Ph of 0.015% and 0.040% max;  
铜管必须符合ASTM B280 或AS 1432-1966标准,最小含铜量99.90%, 最小Ph 0.015%, 最大Ph0.04%;
- Maximum of 1% ovality acceptable for the connection pockets;  
承接口处椭圆度≤1%;
- Parts need to be branded according to logo requirement;  
零件需按要求打印商标;
- No sharp edges or shoulders. All changes in shape must be with a smooth and suitable radius for maximum strength;  
没有飞边和毛刺, 所有形状改变的地方必须是平滑的并且适用于最大强度;
- Minimum Wall thickness is the minimum wall thickness anywhere within the fitting after forming;  
最小壁厚是指成型后任意位置的壁厚。

Description 产品名称	Copper Coupling 3/4" OD x 3/8" ID 直通 3/4" OD x 3/8" ID		
Drawing No. 图纸编号	M040201010	REV 版次	A
Material Master No. 物料编号	040201010	Drawing Size 图幅	A4
Material 材质	TP2	Sheet Number 页码	1/1
Attribute 属性	3/4" OD x 3/8" ID	Third Angle Projection 第三视角	

Linear Dimensions 线性尺寸	Dimensions inside an oval are critical dimensions 椭圆内尺寸为关键尺寸			Angular Dimensions 角度尺寸	Estimated Weight 预估重量	Scale 比例	Unit 绘图单位
	0 Decimal Place 整数	1 Decimal Place 1位小数	2 Decimal Place 2位小数				
±1.0	±0.2	±0.05	±2°	±0.5°	16 g	2:1	mm

Tolerance Unless Stated Otherwise 未注尺寸公差

Approved\_by 批准: Julian Parker, 2020/05/20

Checked\_by 审核: Leo Wu, 2020/05/20

Drawn\_by 绘图: Zhou Lei, 2020/05/20