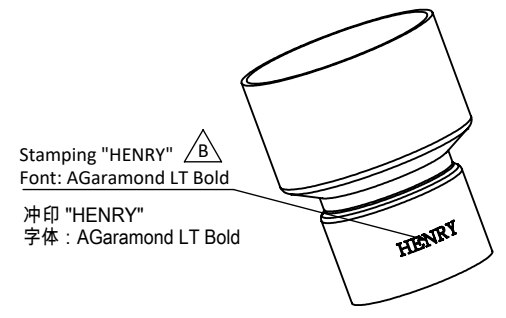
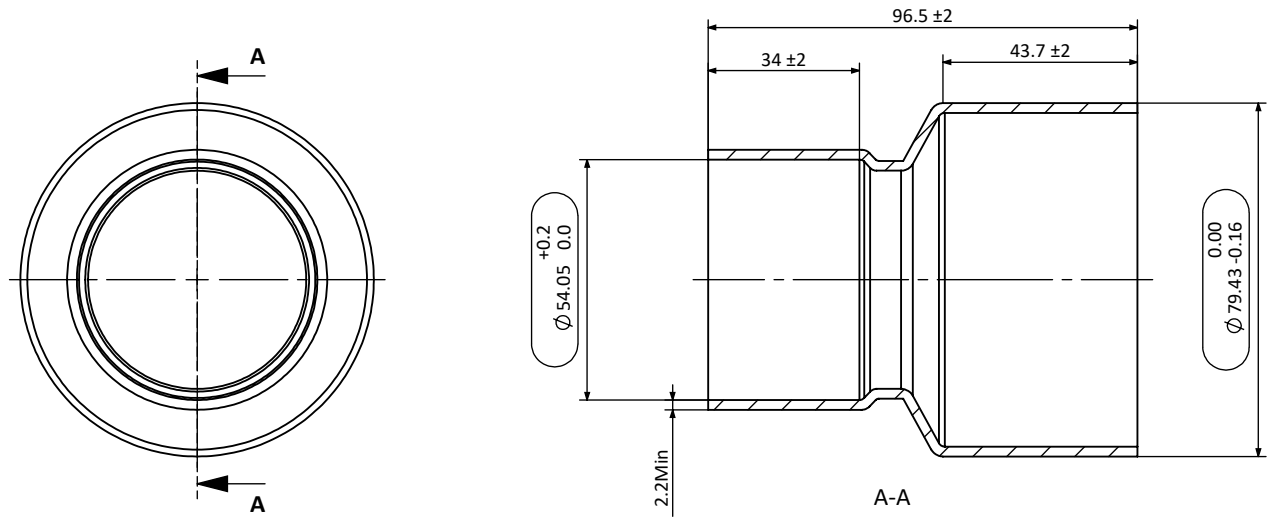


<b>HGI Part No.</b> 1004-5034		08/01/2019 HENRY JTP <i>[Signature]</i> APPROVED DOCUMENT		<b>REV.</b> 版本 △ B	<b>ENC</b> 工程变更通知 ECN-HT19002	<b>Description</b> 变更描述 Logo location changed to ODF side	<b>Name</b> 变更人 Cai Wangwang	<b>Date</b> 变更日期 2019.1.3
----------------------------------	--	---	--	--------------------------	-------------------------------------	---	------------------------------------	---------------------------------



**Technical requirements:**

**技术要求:**

- Copper tube must comply with ASTM B280 or AS 1432-1966 99.90% min Cu and min Ph of 0.015% and 0.040% max;  
铜管必须符合ASTM B280 或AS 1432-1966标准,最小含铜量99.90%,最小Ph 0.015%,最大Ph0.04%;
- Maximum of 1% ovality acceptable for the connection pockets;  
承接口处椭圆度≤1%;
- Parts need to be branded according to logo requirement;  
零件需按要求打印商标;
- No sharp edges or shoulders. All changes in shape must be with a smooth and suitable radius for maximum strength;  
没有飞边和毛刺,所有形状改变的地方必须是平滑的并且适用于最大强度;
- Minimum Wall thickness is the minimum wall thickness anywhere within the fitting after forming;  
最小壁厚是指成型后任意位置的壁厚。

<b>Description</b> 产品名称	<b>Copper Coupling 3 1/8" OD x 2 1/8" ID</b> 直通 3 1/8"ODx2 1/8"ID		
<b>Drawing No.</b> 图纸编号	M040201096	<b>REV</b> 版次	B
<b>Material Master No.</b> 物料编号	040201096	<b>Drawing Size</b> 图幅	A4
<b>Material</b> 材质	TP2	<b>Sheet Number</b> 页码	1/1
<b>Attribute</b> 属性	3 1/8"ODx2 1/8"ID	<b>Third Angle Projection</b> 第三视角	

<b>Linear Dimensions</b> 线性尺寸	0 Decimal Place 整数	1 Decimal Place 1位小数	2 Decimal Place 2位小数	<b>Angular Dimensions</b> 角度尺寸	0 Decimal Place 整数	1 Decimal Place 1位小数	Ra 1.6 	<b>Estimated Weight</b> 预估重量	486.5g	<b>Scale</b> 比例	1:2	<b>Unit</b> 绘图单位	mm
	<b>Tolerance Unless Stated Otherwise</b> 未注尺寸公差				±1.0	±0.2		±0.05	±2°		±0.5°		



1

2

3

4

1

2

3

4

A

B

C

D