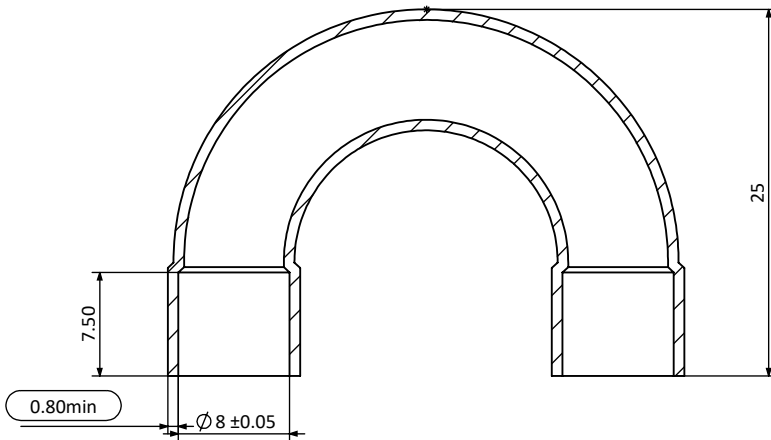
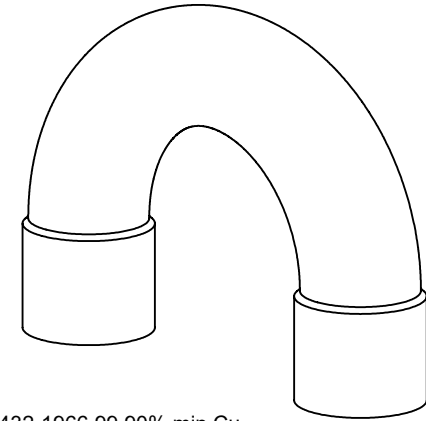
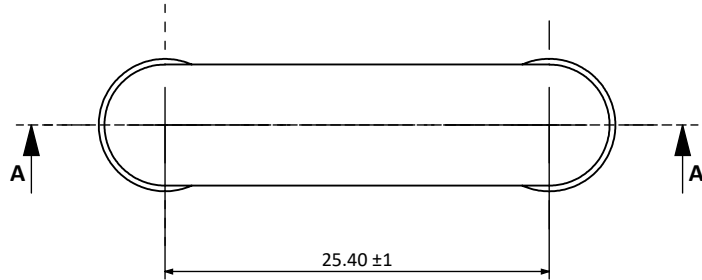


HGI Part No.

28/11/2018 HENRY
 JTP *JTP*
 APPROVED DOCUMENT

1062-0516

REV. 版本	ENC 工程变更通知	Description 变更描述	Name 变更人	Date 变更日期



Technical requirements:
 技术要求：

- Copper tube must comply with ASTM B280 or AS 1432-1966 99.90% min Cu and min Ph of 0.015% and 0.040% max;
 铜管必须符合ASTM B280 或AS 1432-1966标准,最小含铜量99.90% , 最小Ph 0.015% , 最大Ph0.04%;
- Maximum of 1% ovality acceptable for the connection pockets;
 承接口处椭圆度≤1%;
- No sharp edges or shoulders. All changes in shape must be with a smooth and suitable radius for maximum strength;
 没有飞边和毛刺, 所有形状改变的地方必须是平滑的并且适用于最大强度;
- Minimum Wall thickness is the minimum wall thickenss anywhere within the fitting after forming;
 最小壁厚是指成型后任意位置的壁厚。

Description 产品名称	5/16" ID Return Bend 5/16" ID U型弯头		
Drawing No. 图纸编号	M040201423	REV 版次	A
Material Master No. 物料编号	040201423	Drawing Size 图幅	A4
Material 材质	TP2	Sheet Number 页码	1/1
Attribute 属性	5/16" ID	Third Angle Projection 第三视角	

Dimensions inside an oval are critical dimensions
 椭圆内尺寸为关键尺寸

Linear Dimensions 线性尺寸	0 Decimal Place 整数	1 Decimal Place 1位小数	2 Decimal Place 2位小数	Angular Dimensions 角度尺寸	0 Decimal Place 整数	1 Decimal Place 1位小数	Ra 1.6	Estimated Weight 预估重量	7.72g
	±1.0	±0.2	±0.05		±2°	±0.5°		Scale 比例	2:1
Tolerance Unless Stated Otherwise 未注尺寸公差									

Approved_by 批准	Julian Parker	11/26/2018
Checked_by 审核	Leo Wu	11/26/2018
Drawn_by 绘图	Cai Wangwang	11/26/2018



A

B

C

D