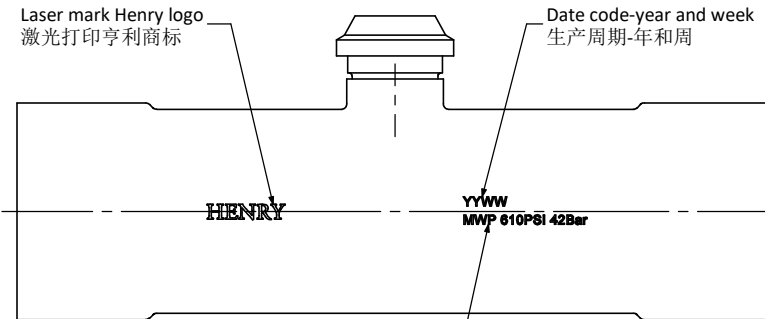
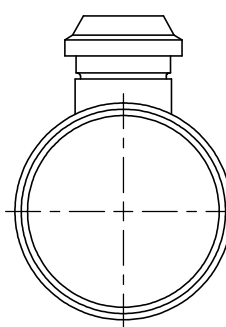
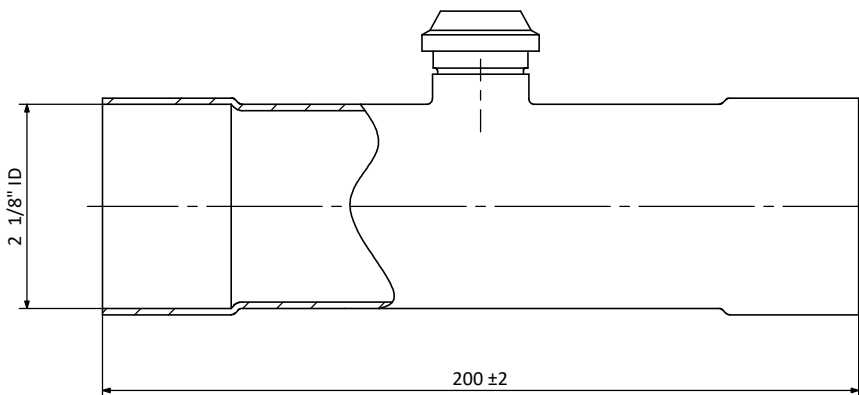


HGI Part No.
670-3434 -customer

17/07/2018 HENRY
JTP *[Signature]*
APPROVED DOCUMENT

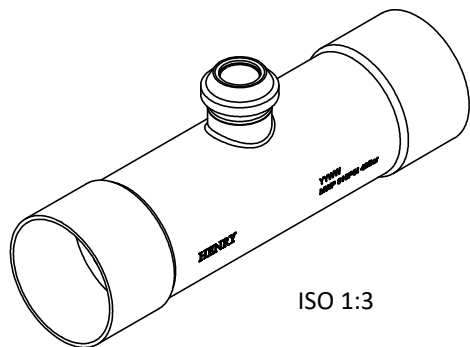
REV. 版本	ENC 工程变更通知	Description 变更描述	Name 变更人	Date 变更日期



Max Working Pressure: 610PSI (42Bar)
最大工作压力: 610PSI (42Bar)

Technical Requirements:
技术要求:

1. Safe working pressure 4.2MPa;
安全工作压力为4.2MPa;
2. Leak test pressure 6MPa;
泄漏测试压力为6MPa;
3. Burst pressure 12.6MPa;
爆破压力为12.6MPa;
4. Operating temperature range of -50°C to +85°C;
操作温度范围为-50°C ~ +85°C;
5. Manufacture to AS/NZS 5149.2.
制造标准为 AS/NZS 5149.2.



Description 产品名称	Hermetic Sight Glass 2 1/8"		
Drawing No. 图纸编号	M030509429		REV 版次
Material Master No. 物料编号	030509429		Drawing Size 图幅
Material 材质	N/A		Sheet Number 页码
Attribute 属性	2 1/8"		Third Angle Projection 第三视角

Linear Dimensions 线性尺寸	0 Decimal Place 整数	1 Decimal Place 1位小数	2 Decimal Place 2位小数	Angular Dimensions 角度尺寸	0 Decimal Place 整数	1 Decimal Place 1位小数	Ra 1.6	Estimated Weight 预估重量	N/A
	±1.0	±0.2	±0.05		±2°	±0.5°		Scale 比例	1:2
Tolerance Unless Stated Otherwise 未注尺寸公差								Unit 绘图单位	mm

Approved_by 批准	Julian Parker	7/12/2018
Checked_by 审核	Leo Wu	7/12/2018
Drawn_by 绘图	Nancy Huang	7/11/2018

