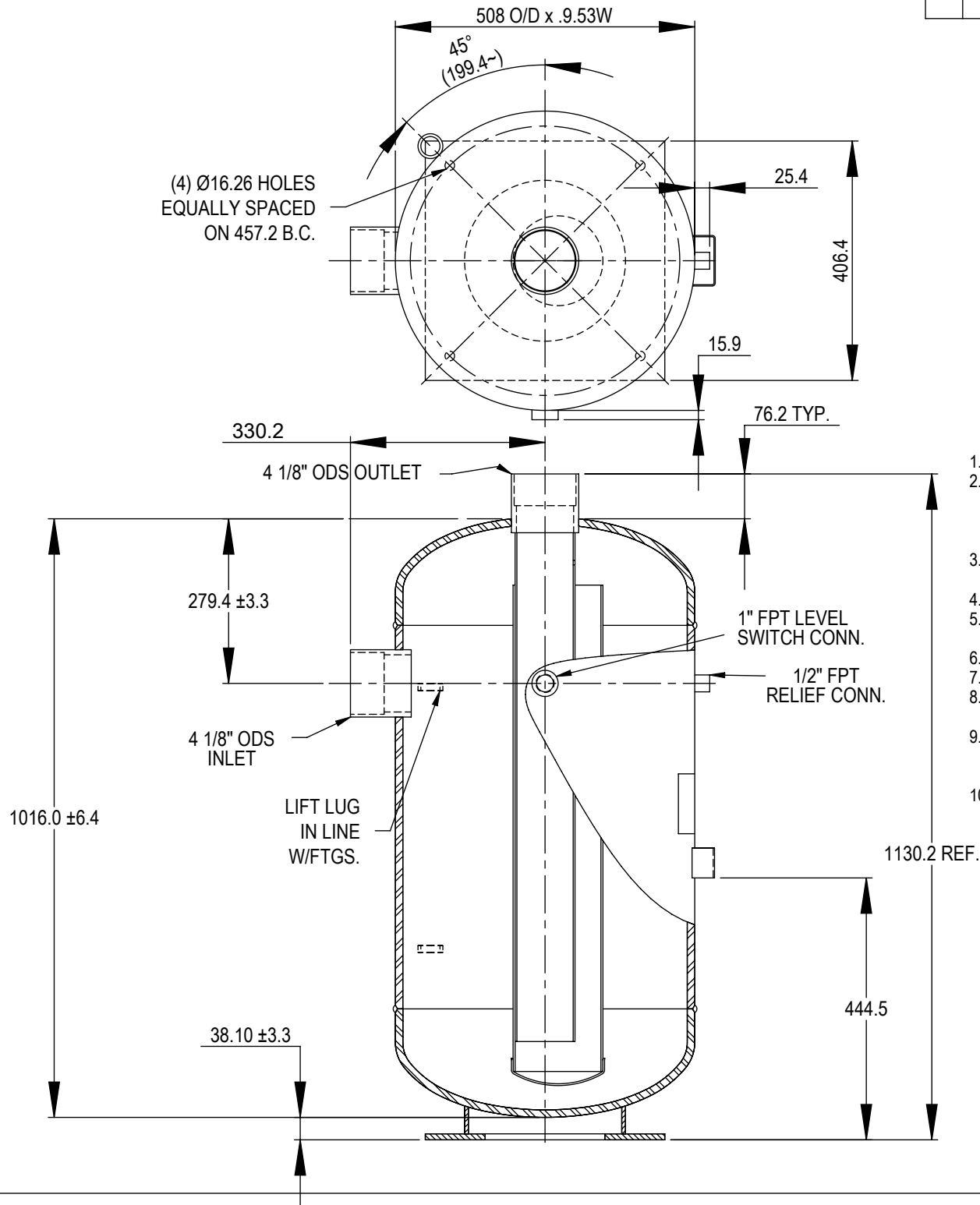


ALL DIMENSIONS IN MMs U.O.S.



1. INSIDE TO BE FREE OF DIRT, RUST, & MOISTURE.
2. STAMP NAMEPLATE WITH NAT'L. BD. NO., MAX. ALLOWABLE WORKING PRESSURE (M.A.W.P.), M.D.M.T. -40°F, SERIAL NO., YEAR BUILT, PART NO., & CRN PER AE-1609.
3. ALL WELDS, UNLESS OTHERWISE SHOWN, PER AE-1550 AND PRODUCTION SUPT.
4. INSTALL PIPE PLUG PER AE-1564.
5. PNEUMATIC TEST PRESSURE 572 PSIG, TEST PER AE-1551-CE.
6. MAX. WORKING PRESSURE 400 PSIG.
7. FINISH: BLUE PAINT #2-050-001 PER AE-1540.
8. VESSEL INTENDED FOR NON-CORROSIVE SERVICE PER UG-46(a)(4).
9. MARK CE NAMEPLATE WITH PART NO., SERIAL NO., YEAR MFD., DESIGN PRESSURE, DESIGN VOL, DESIGN TEMP, TEST PRESSURE, TEST DATE, AND COMPATIBLE REFRIGERANTS.
10. WELD ALL AROUND BOTH LEGS OF NAMEPLATE BRACKET.

A	1ST ISSUE	25/01/17	MM
REV	ALTERATION	DATE	BY
TOLERANCES UNLESS OTHERWISE SPECIFIED; 0.00±.13, 0.0±1.65, ANGR±2°			
		CUSTOMER/PART NO. AC&R CATALOG	
		PART DESCRIPTION 4 1/8" ODS CAT IV 508mm Ø ACCUMULATOR	
DATE	BY	CHK'D	SCALE
25/01/17	MM		NTS
PART NO		REV	
S-7742-CE		A	
-CUST(Metric)			