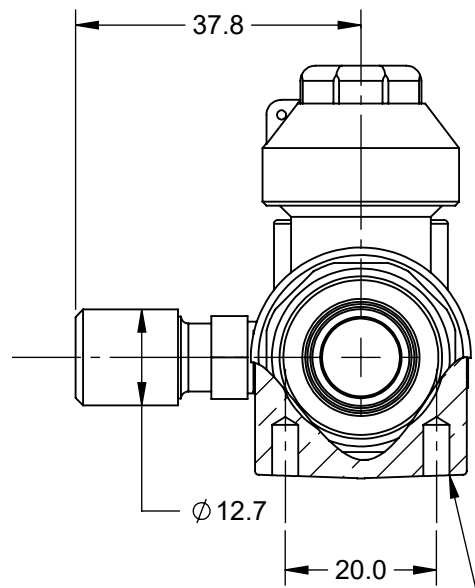
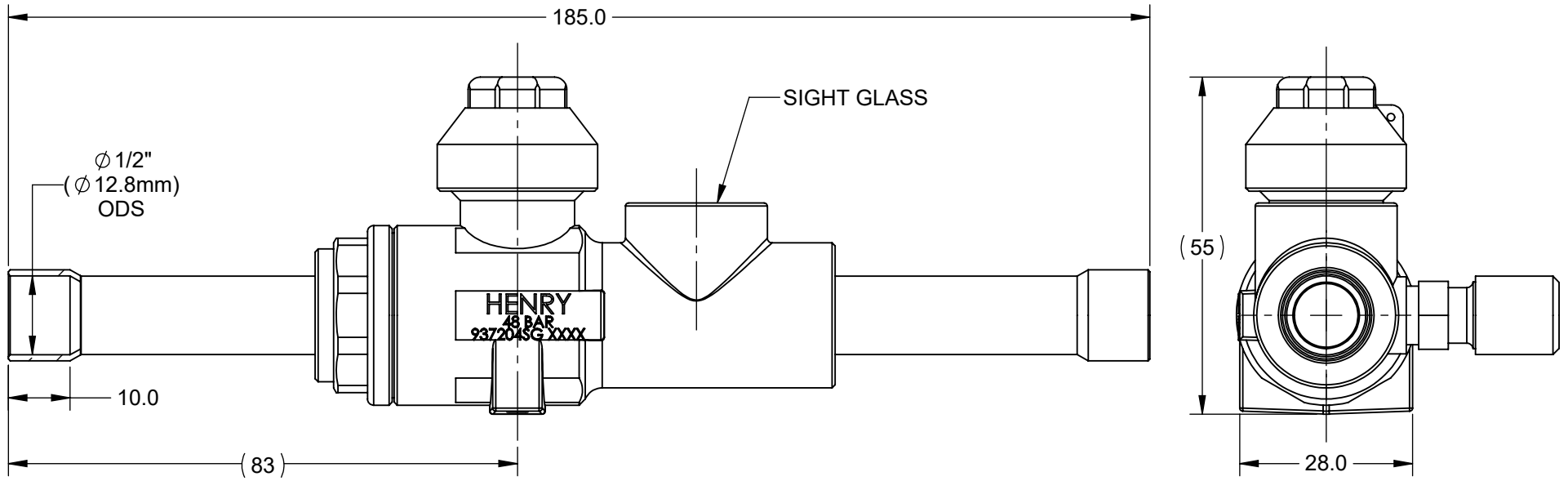





GENERAL TOLERANCES	ALL DIMENSIONS IN mm
NO DECIMAL PLACES = ±1.5	ANGULAR = ±2°
ONE DECIMAL PLACE = ±1.0	ALL UNSPECIFIED
TWO DECIMAL PLACES = ±0.5	ANGLES SHALL BE 45°



NOTES:

1. MAXIMUM WORKING PRESSURE: 60 BARG
2. OPERATING TEMPERATURE: -40°C to +120°C
3. CO<sub>2</sub>, HCFC & HFC COMPATIBLE
4. BI-DIRECTIONAL FLOW

MOUNTING HOLES 8-36 UNF-2B (2 POSITIONS)

CONNECTION SIZE	1/2" ODS	MATERIAL	
DESCRIPTION OF EQUIPMENT	<b>1/2" (12.8mm) ODS Ball Valve, Sight Glass (Schrader)</b>		
PART NUMBER	937204SG	CURRENT ACTIVE REVISION	A
SCALE	1:1	 <b>HILLINGTON, GLASGOW, UK</b>	
DRAWN	R.Muholland		
DATE	21/09/23		
CUSTOMER DRAWING	DRAWING No.	937204SG-Cust	REVISION <b>A</b>