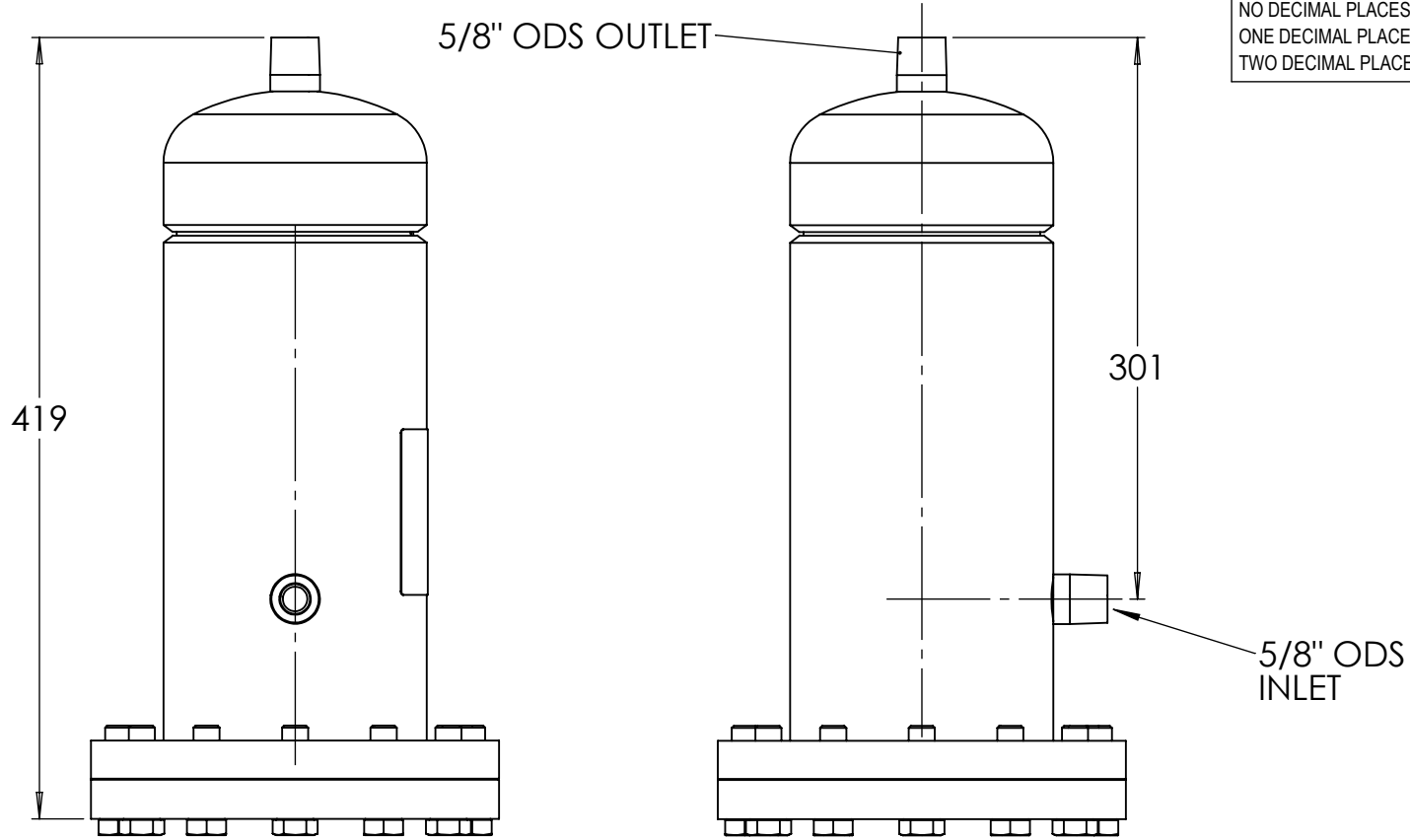
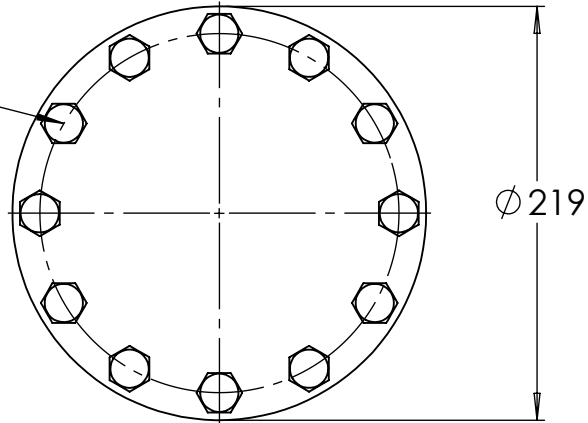




GENERAL TOLERANCES	ALL DIMENSIONS IN mm
NO DECIMAL PLACES = ±1.5	ANGULAR = ±2°
ONE DECIMAL PLACE = ±1.0	ALL UNSPECIFIED
TWO DECIMAL PLACES = ±0.5	ANGLES SHALL BE 45°



12xM14  
Screws on  
Ø190 PCD



**Technical Specifications:**

**Allowable Operating Temperature = -10°C to +70°C**

**Allowable Operating Pressure = 0 to 130 Barg**

CONNECTION SIZE 1 1/8"	MATERIAL	
DESCRIPTION OF EQUIPMENT <b>REPLACEABLE CORE FILTER DRIER 1 1/8" ODS</b>		
PART NUMBER SRCT-489	CURRENT ACTIVE REVISION B	
SCALE 1:4		
DRAWN M. Rapach		
DATE 18/4/24	DRAWING No. <b>SRCT_489-Cust</b>	
CUSTOMER DRAWING	REVISION <b>B</b>	